

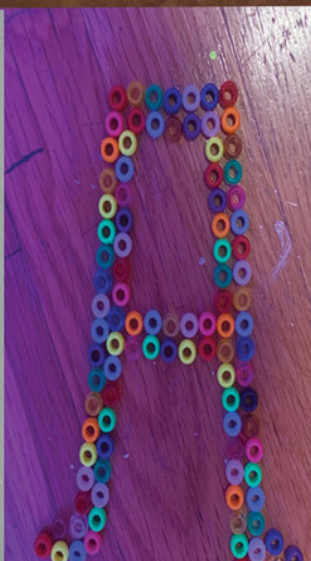
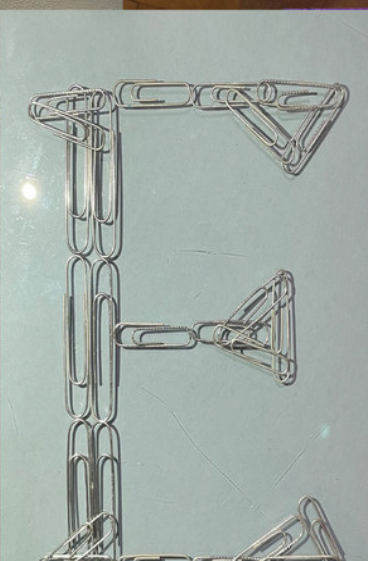
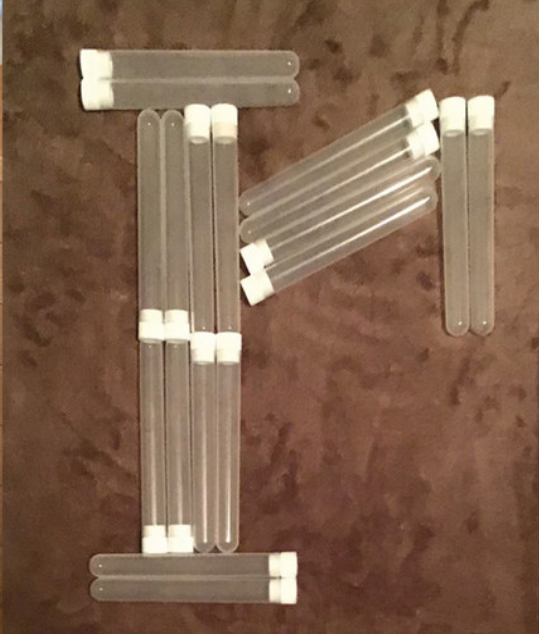
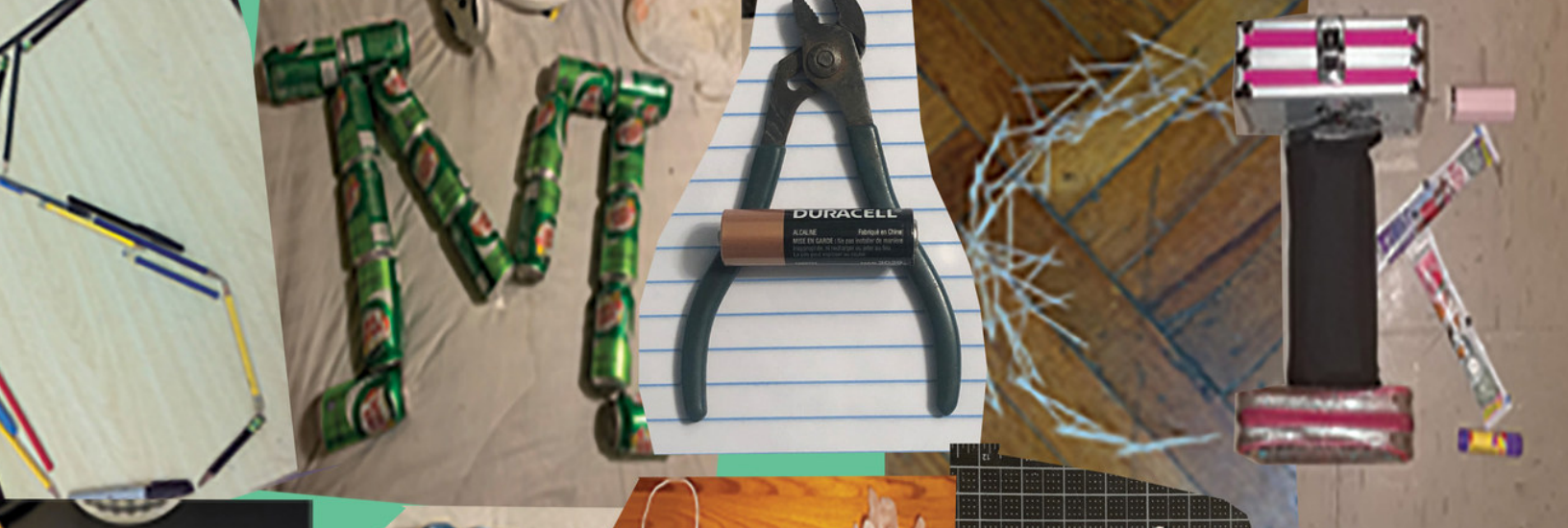
ART READY

2020 - 2021

A PRINT EXHIBITION
BY NYC PUBLIC HIGH
SCHOOL STUDENTS



S m a c k M e l l o n



Smack Mellon is a nonprofit arts organization located in DUMBO, Brooklyn. Smack Mellon's mission is to nurture and support emerging, under-recognized mid-career and women artists in the creation and exhibition of new work, by providing exhibition opportunities, studio workspace, and access to equipment and technical assistance for the realization of ambitious projects. We see ourselves as a vehicle whereby under-represented artists can create, explore and exhibit their creative ideas outside the concerns of the commercial art world, offering many artists the exposure and recognition they deserve.

Smack Mellon's Art Ready program brings high school aged artists in 10th to 12th grades into the studios of New York City's most innovative and inspiring cultural makers. The program is open to students attending New York City public high schools.

Art Ready operates during the school year and includes a series of studio visits with emerging and established artists; a series of field trips to museums and galleries; portfolio prep workshops; and a four-month arts mentorship. Art Ready connects up to twenty-one high school students with seven diverse artists to gain practical experience working with professionals in a variety of artistic disciplines. There is no fee to participate, and all expenses, including museum admissions, transportation and food, are paid.

Art Ready engages young people in a way no other arts education program does. It pairs students directly with working artists to learn firsthand over the course of the school year what it is to be a professional artist with an active studio. Working as mentors, the artists provide professional and creative guidance as the students make decisions about their futures in the arts. Mentor/teaching artists tutor the students in their creative process, introduce them to new ways of working, and engage them in continuous critical reflection.

Smack Mellon's Education Programs are supported, in part, by public funds from the New York City Department of Cultural Affairs in partnership with the City Council, New York City Council Member Stephen Levin, and with support from Select Equity Group Foundation, Exploring The Arts and Smack Mellon's Members.

Smack Mellon's programs are also made possible with public funds from the New York State Council on the Arts with the support of Governor M. Andrew Cuomo and the New York State Legislature, the National Endowment for the Arts, and with generous support from The Andy Warhol Foundation for the Visual Arts, The Edward and Sally Van Lier Fund of The New York Community Trust, The Roy and Niuta Titus Foundation, Jerome Foundation, Robert Lehman Foundation, Milton and Sally Avery Arts Foundation Inc., Iorio Charitable Foundation, and Smack Mellon's Members.

Space for Smack Mellon's programs is generously provided by the Walentas Family and Two Trees Management.

In-kind donations are provided by Artist & Craftsman Supply, Costco, Fairway, Trader Joe's, and by Materials for the Arts, NYC Department of Cultural Affairs/NYC Department of Sanitation/NYC Department of Education.



P. 6-7

Onyx Disla

As an artist, I have work mostly in illustration, graphic design, and occasionally dabbled in animation. I love working in design and animation, but wanted to challenge myself and try something different, something incredibly new to me. Inspired by my amazing mentor's work (Felicita "Felli" Maynard), and armed with my mother's old Canon AV-1 film camera, I started working on my own photography. With a friend, I hiked through Fort Tryon Park and snapped some amazing pictures. (As well as some not-so-good, blurry ones.) These four pictures spoke to me the most. They felt eerie, but familiar, like how you'd think of a memory in a certain hue. So I created a story within them...with ghosts! I'd like to think of it as one of the adventures of these little Ghost Buddies.

P. 8-9

Eric Garcia

In a very big city, many people feel secluded. Sometimes you feel trapped in a box where it's almost impossible to show your true emotions. However, there are many outlets to feel comfortable and represented. Expressing yourself with clothes and fashion is one of the best way to show your personality. My project relates to the lifestyles of many teenagers growing up in urban environments. In isolated environments, the freedom of expressing yourself from the inside out is very liberating. It feels almost like a fantasy turned into reality, which is what I wanted to capture in my project.

P. 10-11

Jazee Handfield

Hi! I 'm Jaz and I made the moon. Here are some facts about the moon that I think are important, the moon has an official name: its Luna. The moon is always drifting away from the earth, about 3.8 cm every year. The moon has quakes too! They're called moonquakes. They are caused by the gravitational influence of the Earth. These are all interesting and unique things about the moon. For this project, I choose to make America breaking the moon. I love the moon so you might be wondering why I wanted to break it, I broke it because I think it's human nature to kind of ruin the things you love, if even on accident. So, I guess this is what I think would happen if someone cracked open the moon.

P. 12-13

Ximena Mejia

Myself, 2021, cardboard, paper, acrylic paint, 41.3cm x 30cm

Le Tre Donne, 2021, air drying clay & acrylic paint, 25cm x 9cm x 1.5cm

México en la Piel, 2021, air drying clay & acrylic paint, 25.5 cm x 10 cm x 4 cm

P. 14-15

Kristina Rae Lawrence

The Bloom Collection, is an experimental collection of funky floral jewelry, inspired by the feeling of youth. The fresh color scheme of pinks and greens along with the floral patterns are reminiscent of springtime, which inspired the collection's name. The unique shapes and designs incorporated in the jewelry give this collection a playful appearance. Materials used to create this collection include polymer clay and tabletop resin.

P. 16-17

Michelle Shum

My little eyes lay on a ten gallon tank where they fly above each other, soaring heights to the other side and I envision the fishes from my childhood home now roam. In "A Walk on Water", the luminescent hues mimic a dream-scape inspired by aquatic life forms braiding air and water. This piece alongside "Breathless and Swallow" splits mass from shape, distorting the aura of a character from its definitive form. It's a study of natural patterns like the scales of a fish and a human spine in which anatomies diverge.

P. 18-19

Miguel Mendoza

What has transpired the last year and 2 months of the pandemic? Division within the United States with false info, statements that can be true or false, shutdowns, curfews and heartbreak. No one is safe from the pandemic, especially those who are 'immune.' With a new president in the White House, a new era will begin. The first work is a cow named Ernesto. He's inspired by one of the cows that mi abuelo owned in Mexico. The second is a Plague mask based on the noir films of the 1930's.

P. 20-21

Zoe R. M. Tan

2020-2021, 2021, acrylic paint, magazine, pencil on paper, cardboard, 15" L

Disorder in Order, 2021, pen on paper, marker, 5.5" L x 8.5" H

Summed Up, 2021, thread, jewelry, acrylic paint, pen on post-it notes, marker, 14" L x 11" H

P. 22-23

Pharaoh Halley

My art uses bold linear lines that draw upon familiar subjects. My work is often influenced by fan art and replica art. I start with things that I know - movies, television shows, my neighborhood - and research how others have represented them. As a starting point, I use a ruler to draw straight lines and then trace over them with a black marker to make my subject stand out. After starting with how others have drawn these subjects, I make it my own. When I drew the Bronx mural, I used theme colors from the Incredibles Movie to fill the letters of the "Bronx" and used a black marker to turn the letters into 3D. For the magazine collage, I started with the figure of one of my favorite objects: the sneaker! After cutting out the shape of a sneaker in black, I cut out images with gold colors to fill the shoe, giving the artwork bold hues of black and gold. My artwork represents everything I love, and I want to share that with the world.

P. 24-25

Judah Frazier

When I work on these artworks, I usually go for a landscape portrait or something that defines what I like in art. I like looking at beautiful sceneries that are pleasant to the eye, and that thought informs my works. I love aesthetically pleasing works, highly detailed works, as well as simplistic works.

These all influenced my works shown, as they fit the nature and landscape feel that I love. Houses work well with scenery, a starry night is a sight to behold, and the moon shines along with the stars, adding luminosity. In short, everything compliments each other well and makes a great piece.

P. 26-27

Diego Corsino-Pierrot

My work seems minimalistic because... well... it is! When I worked on these drawings/photos I usually based them off of something that I already have or seen like the capture card and the chinatown mural.

My work isn't too much however that was my goal to make it simplistic. Personally I enjoy looking and appreciating the small simple things of life that many of us pass by each day.

P. 28-29

Valerie Mirra

Mural: The Philosopher's Tree

As I began working on this 7' x 26' mural, my first consideration was the movement and flow of the piece within the space. Painted within a long and narrow corridor leading to a photography studio, I wanted the painting to give a feeling of forward motion, like a rush of creative energy that pushes an artist forward before and during the process.

I had a broad idea of what I wanted to convey- inspiration and communication as a motif? Deities of intellect represented by birds? Planets in orbit held together on an orbital pathway?

P. 30-33

Frank Bill Felipe

Frank Bill Felipe presents the following works paired with written text describing the meaning: Zipper Vase, Anyone Can Wear the Mask, Justice 4 la Raza, Peace Sculpture, The Different Bracelets, Pyramid and Heart.



Who Goes There?

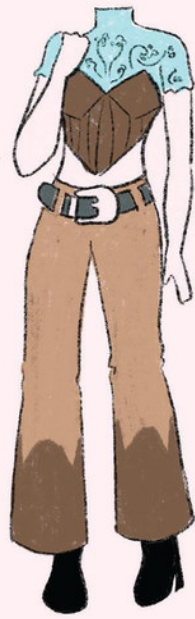


"There is no gate"

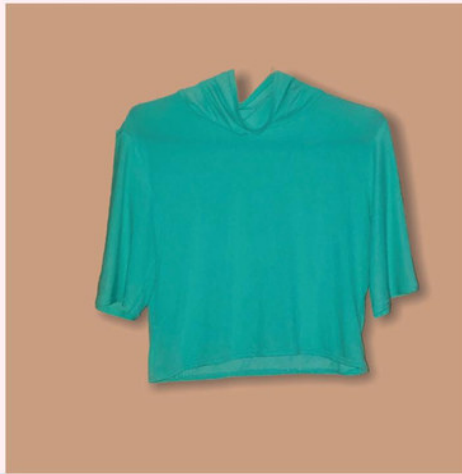
Sep. 25,
1993



Light at
the end



First drafts



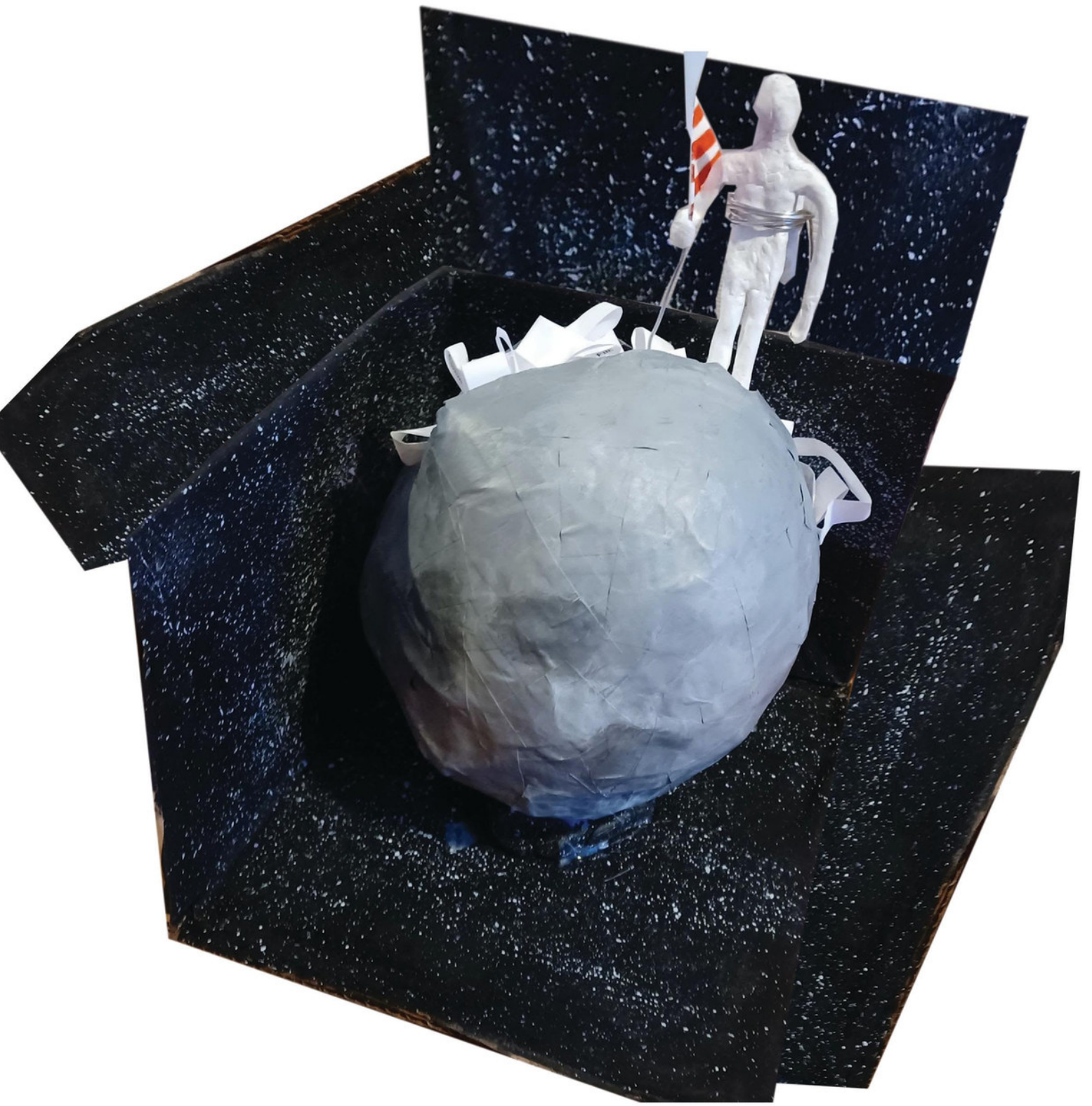
Finalized
Designs





TEENAGE FANTASY

BY: ERIC GARCIA



**America
Destroying the
Moon**
by: Jazee Handfield



XIMENA MEJIA



Ximena Mejia is a Mexican born beginner artist based in NYC. During her time at Smack Mellon, she produced 3 projects. The first one is titled "Myself" and is a self-portrait on cardboard. While creating this piece, Miss Esperanza guided her to be more precise in her drawings. The background is inspired by "The Starry Night" by Vincent Van Gogh, one of her favorite painters. The sunflowers are her favorite flowers. The sharpener and bottle of paint symbolize the beginning of her journey as an artist.

Myself, 2021, cardboard, paper, acrylic paint, 41.3cm x 30cm

XIMENA MEJIA



México en la Piel, Mexico in the Skin. This piece is dedicated to her mother as well as a tribute to where she comes from. The title of the piece comes from the song "México en la Piel" by Luis Miguel, a famous singer in Mexico, who describes beautiful, bright, and colorful places in Mexico.

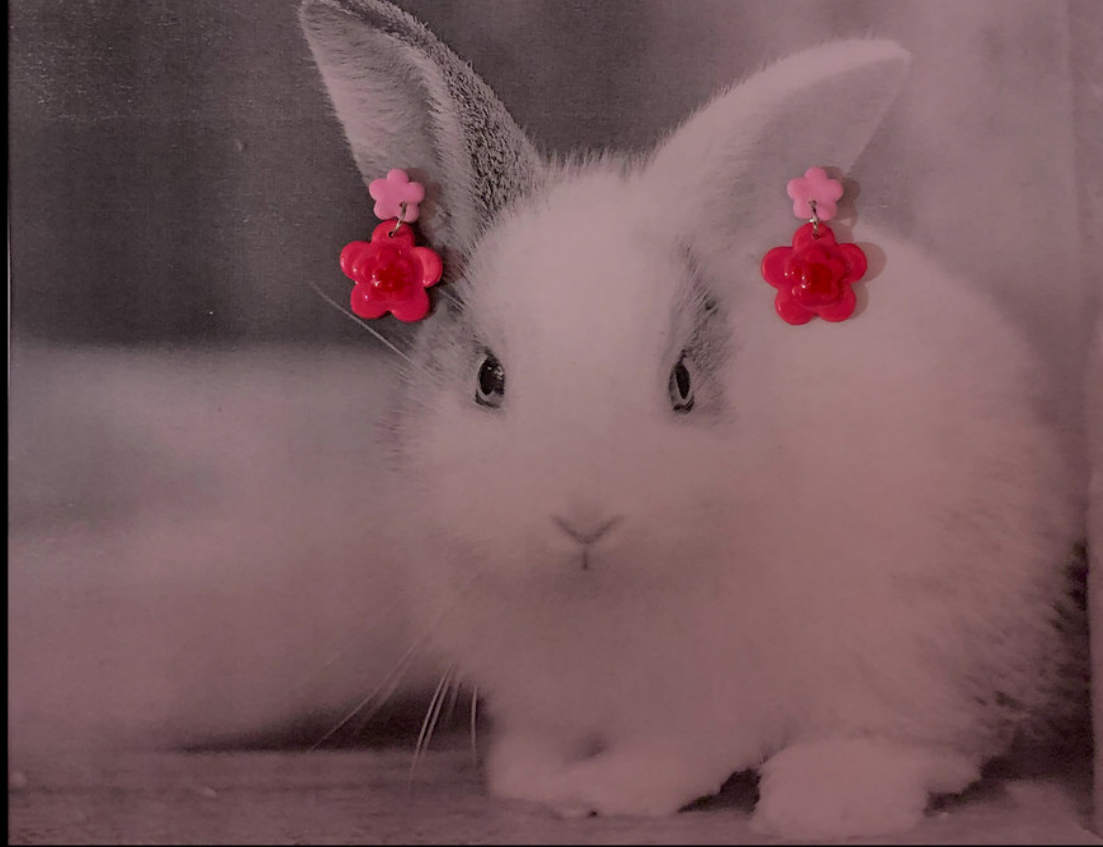
Mexico en la piel, 2021, air drying clay & acrylic paint, 25cm x 9cm x 1.5cm



Le Tre Donne, means the three women in Italian. The meaning behind "The Three Ladies" is the connection that the woman's body has with nature, fertility, fragility and the ability to produce life.

Le Tre Donne, 2021, air drying clay & acrylic paint, 25.5 cm x 10 cm x 4 cm







Michelle Shum

Breathless and Swallow, 2021

Oil paint on Canvas Panel , 16" x 20"



Michelle Shum
A Walk On Water, 2021

Oil paint on Canvas Panel , 20" x 24"





ZOE R.M.TAN



2020-2021, 2021, acrylic paint, magazine, pencil on paper, cardboard, 15" L

My most recent artworks are reflections of my COVID-19 experience. It started off with being uncertain. Uncertain about what was going to happen and when everything was going to go back to normal. As time stretched on, the loneliness settled in after not being able to meet up with friends. A couple more months passed and people started getting used to this new way of living. It became the new normal. Personally, after months of that isolation, I have grown used to it and even found comfort in having this time to myself. Right now, I feel like I'm living in a state of calmness.

ZOE R.M.TAN



Disorder in Order, 2021, pen on paper, marker, 5.5" L x 8.5" H



Summed Up, 2021, thread, jewelry, acrylic paint, pen on post-it notes, marker, 14" L x 11" H

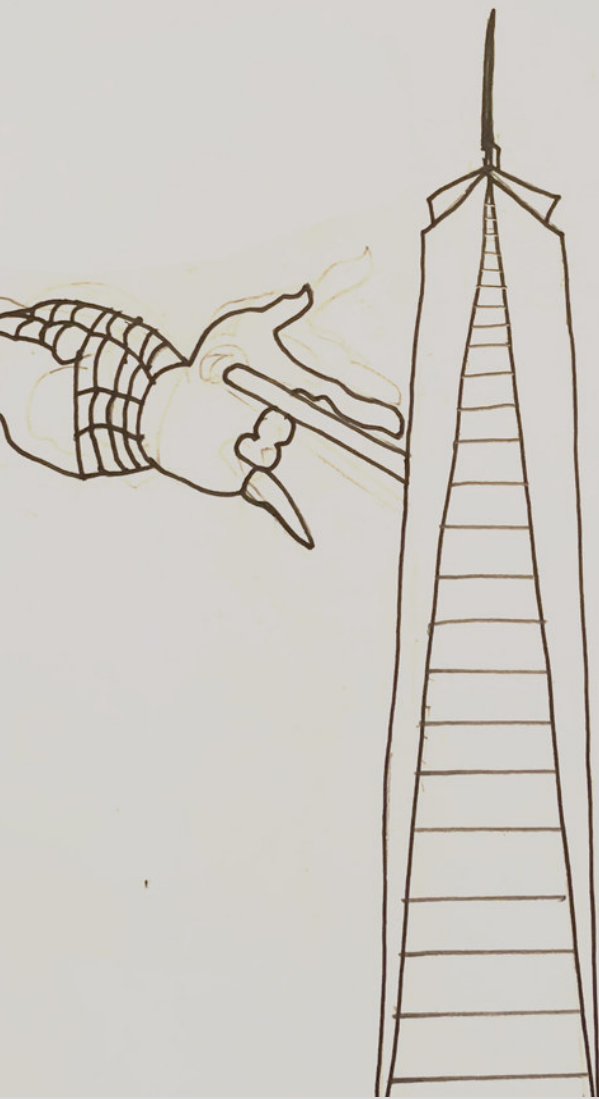
Pharaoh



Pharaoh Halley
PHARAOH, Pen and Ink Logo Design



Pharaoh Halley
Sneaker Design, Collage



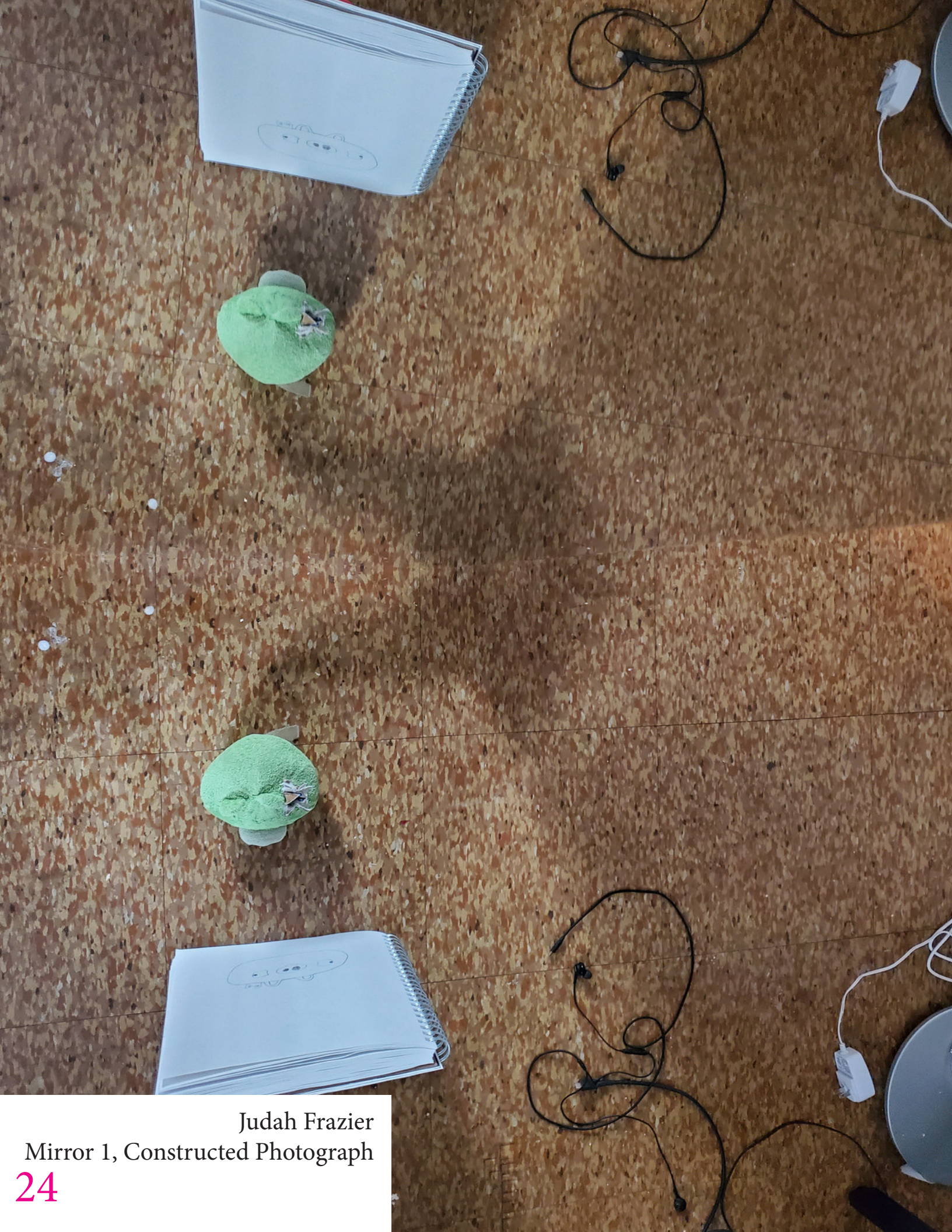
Pharaoh Halley
SuperHero Lines, Pen and Ink



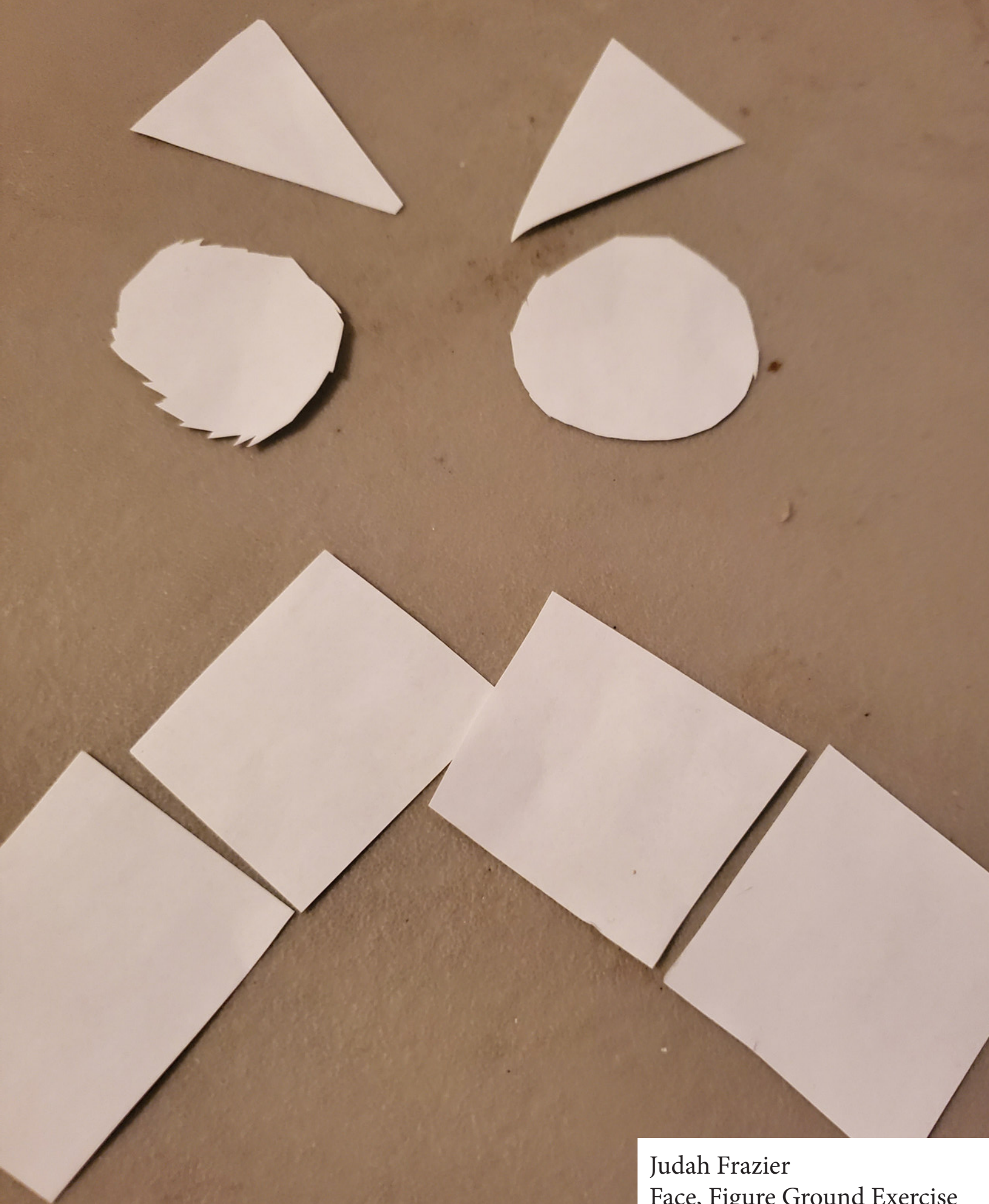
Pharaoh Halley
Kobe, Collage



Pharaoh Halley
BRONX, Figure Ground Drawing

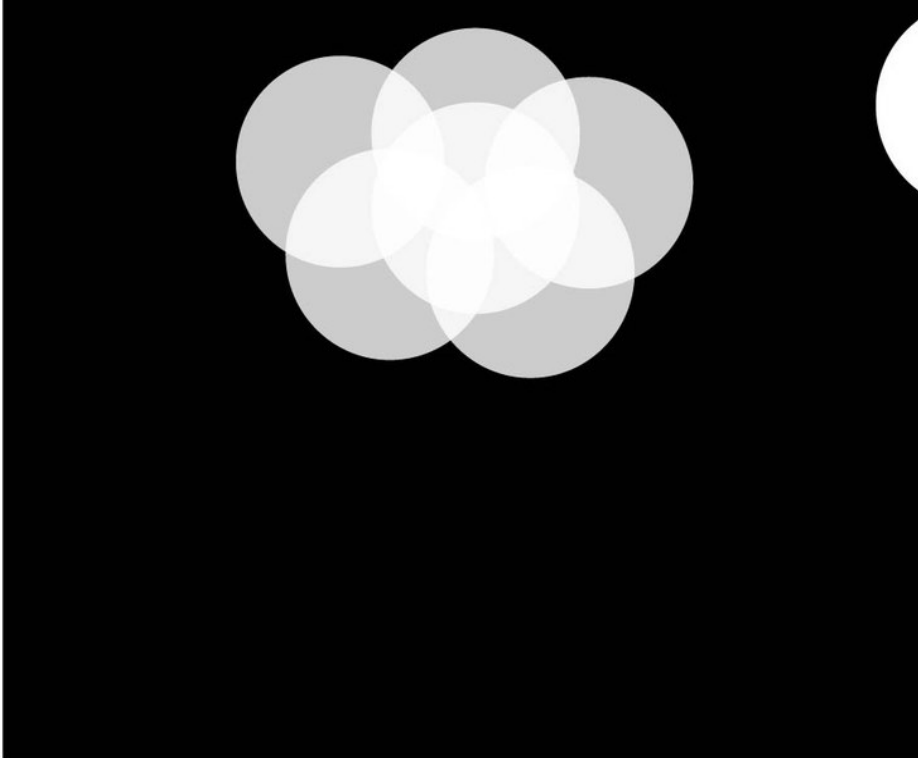
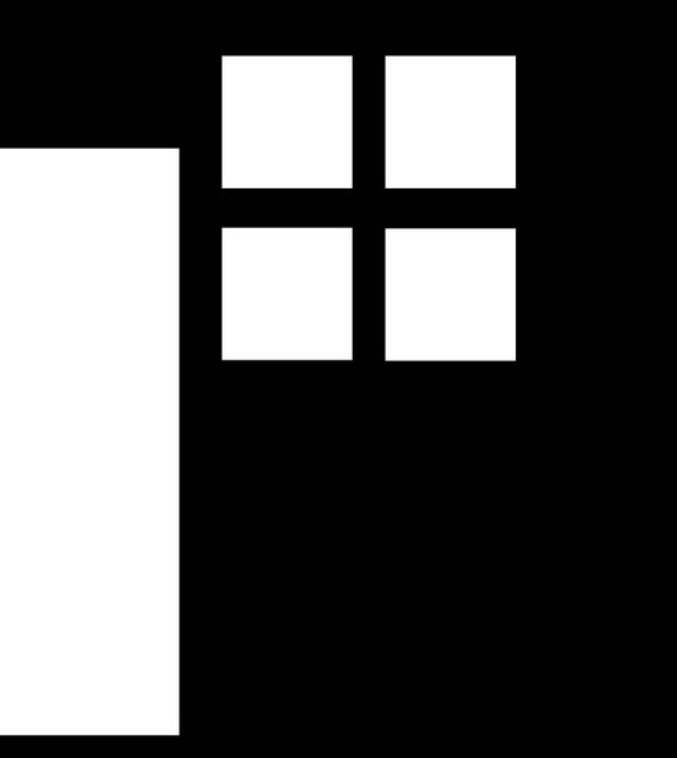


Judah Frazier
Mirror 1, Constructed Photograph





Diego Corsino-Pierrot
Meteor Falls, Digital Drawing



Diego Corsino-Pierrot
Thirds, Digital Figure-Ground Drawing



Diego Corsino-Pierrot
Tree Swing Lines, Digital Drawing



meat
up

~~more
one year
transdimensional
CONCEPTION to~~

⊗ active, brown, liquid
illusion of gold.
Black / warm white.
Duo chromatic. Ultramarine blue

LORGANON



tics
obstion / microcosm

(x) Tapping
emotion and freedom
technique



A DNA
matics /
Artist
scape.





"JUSTICE 4 LA RAZA" FRANK BILL FELIPE

The letterings you see here in this shirt and you see drawn out here are some of the many thoughts of mine that I'd like to get through the public. For example one of them are when I had said "Justice 4 La Raza" Meaning justice for those of the same background as me which is coming from a Mexican descent. There are many and countless of people of the same background as me who have live and experienced what the dark side of America aholds for us just as any person of color has faced. Which by the way is still going on and no one stops to think that our voices, our thoughts, our dreams, our futures, and our prayers for a better future matter. In the front of the t-shirt you can see a power fist that is of brown color. Which for this instance is to represent brown power (la raza) and symbolize our lucha for justice. In the front of the t-shirt you can see the words. "Different shades of the same colors." Meaning that we might be of different shades of the same color but, that doesn't mean that we should be under-represented or whenever anyone who is fighting for their own justice because when one is fighting for their own justice it shouldn't just be in the lookout for a specific community sufferings because your lucha is my lucha and we are all facing the same circumstances which is having no equal rights as to what someone who is white has.

Creative & Recyclable Bracelets *- Frank Bill Felipe*

These bracelets you see here to your left are all made out of homemade materials. Which for some might find what these bracelets are made of to be of no other use other than what it is most commonly used for. For example one of the bracelets that you see are made out of soda tabs that makes it looks like a road chain for bikes or jail handcuffs, The other bracelet you see here is made out of rubber bands which most poeple use it to tie their hair. The last bracelet you see is a gimp bracelet with some accessories that I had found around my room which I thought would look perfect on the bracelet. But just remember that with some additional creativeness you put into your work you can always make it look very artsy and unique apart from other people's designs which is the whole idea of art. Which in this case worked in my favor because it made me realize that reusing materials means that it can be repurposed into something more useful or creative like how these bracelets came to be.

“Anyone Can Wear The Mask” By Frank Bill Felipe



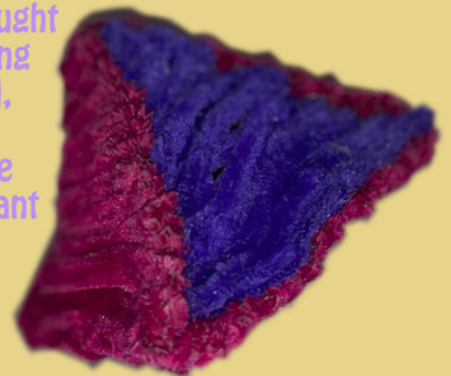
The reason why I had chosen to do this character portrait rather than a stuffed animal or something else. Is well as you can see I made the Miles Morales mask which most of you guys might be familiar with. But, well I love Spider-Man since I was little and one of my reason why I had chosen to do the mask that Miles Morales wears rather than the one Peter Parker wears is because Miles Morales carries on a message to his audience which is that “Anyone can wear the mask” without having to differentiate themselves with the character you see playing the superhero role you admire. But also for any kid who believes that they have nothing to resonate with because usually the superhero they refer to as an idol tends to be a white straight male that plays the superhero role. Making anyone who doesn't have the same characteristics as their favorite superhero having nothing to look up to. But, another reason would be that it tells its audience that no matter who you are or what makes you different from your favorite superhero you look up to, to stop you from having the freedom to call yourself a superhero because you have the power to wear the mask and call yourself a superhero if you want to!



Pyramid And Heart: Frank Bill Felipe



The reason why I had chosen to do this pyramid and heart in the first place is well because there are so many historical landmarks like the pyramids of Giza, the Mayan pyramids or the Aztec pyramids that have been kept in place where they are today. Which is an honor to still have intact with us till this very day. Although my pyramid I have made may not look like any of the historical pyramids I just named. I'd like it to be thought of it that way. But, I was thinking that it be nice to symbolize the beauty and what an honor it is to still have these famous historical pyramids intact with us till this very day. Which is where the heart comes into play, keeping a side the history of how these pyramids came to be built it is just so wonderful how we still have them. But I like how everyone stood in agreeance to keep these pyramids safe and protected for it to be with us today because it is a beauty of art. I believe that with the same love and respect we give these historical landmarks because they are simply art we should also give the same respect and love to those who live within the area where they were built because the ancestors of the people surrounding this art and those who built it were all people of color who were thought to be less than. But, because of that thinking countless of people were then conquered, brutally attacked and enslaved by those who holded superiority. Dehumanizing the people of color which then plays an important factor as to why so many people of color become victims of injustice.



Love & Peace (Sculpture)

Frank Bill Felipe



One reason why I had chosen to do a peace sign sculpture is because of how I wanted it to symbolize how much of an important factor it is to have peace in our world and how essential it is to have it. I have no specifics as to within which regions but, I mean it as globally because peace is not just needed within certain specific areas because no problem is above than the other one and all of them aren't meant to be smaller than others. When I say globally I mean it like that because there are several issues around the world that need fixing. And the reason why I had put the heart where it is, is because of how peace comes within the heart and love for one another. If it doesn't come from the bottom of your heart than frankly it isn't going to stay in place for long. The beauty of peace is that has to come from ones love and comprehension as to why it is needed.

The Zipper Vase:

Frank Bill Felipe

The aim for this artwork was to make a simple small vase. But when I was showed how the vase would look like after its done, I thought to myself what if I challenge myself towards creating a different and unique design but still meeting the objective for this project? Since everyone in the group had been assigned the same objective aim. But at the end it all worked and then became what is the piece of artwork you see here. But I also like how it turned out to be since this is a design that has never been made and I could say that I came up with the idea and made it myself.





Smack Mellon would like to thank the Art Ready Mentors for sharing their experience and craft while guiding this wonderful group of young artists through their own creative process.

Meryl Bennett

Meryl Bennett is a sculptor based in Queens, NY. Born and raised in Rhode Island, she received a BFA from the School of the Art Institute of Chicago in 2011. Bennett has explored many materials and techniques including foundry work, woodworking, textiles, mold making and carving. She takes a multidisciplinary approach to her sculptures, often combining several sculptural techniques into a single piece. Her work explores the boundaries of human and animal behavior in our contemporary world.

www.merylbennett.com



Esperanza Cortés

Smack Mellon Exhibiting Artist (2019)

Esperanza Cortés is a Colombian born multidisciplinary artist based in New York City. Cortés has exhibited nationally in museums and galleries including The Neuberger Museum of Art, Bronx Museum of Art, Queens Museum, El Museo Del Barrio, Smack Mellon Gallery, The Mexi-Arte Museum and The Cleveland Art Museum. Internationally, Cortes has also exhibited in Germany, Hungary, Slovakia, Poland, Japan, Mexico, Colombia, Dominican Republic, Spain and Greece. Cortés is a recipient of awards including: The John Simon Guggenheim Memorial Fellowship: BRIC Media Arts Fellowship: Lower Manhattan Cultural Council Grant: Joan Mitchell Foundation Painters & Sculptors Grant. www.esperanzacortes.com



Florencia Escudero

Florencia Escudero was born in Singapore in 1987 and grew up in Mendoza, Argentina. She lives and works in Brooklyn, New York. Escudero received an MFA in Sculpture from the Yale University School of Art in 2012. Her works have been exhibited at Kristen Lorello, New York, NY, Instituto Cervantes, New York, NY, and The Steuben Gallery, Pratt Institute, New York, NY, among other venues. She was a 2016 year-long Artist in Residence at the Loaisida Center, New York, NY, and has also completed residencies at Art Farm, Marquette, NE, and Pilchuck Glass School, Seattle, WA. Works by Escudero have been discussed in Editorial Magazine, Aether Magazine, The Art Newspaper, Hyperallergic, and The American Reader. She is an editor and founder of Precog Magazine.

www.florenciaescudero.com



Gina Goico

Smack Mellon Studio Artist in Residence (2019-2020)

Gina Goico navigates her identity and the spaces where she exists in the Dominican Republic and the United States. She creates work that ranges from collage to installations, ink drawings and performance. Her work tends to share bright magentas, patterns, fabric and imagery that connects to the Caribbean. Currently her largest body of work is Imagined Identities, part of the #ATABEY project which explores Dominican women's desire, survival, aggressions and rebellions through participatory research, creating new artistic and academic narratives about the lived experiences of women in the Dominican Republic and its diasporas. www.ginagoico.com

Felicita “Felli” Maynard

Felicita “Felli” Maynard is a New York based interdisciplinary artist, and educator. As a 1st generation Afrolatinx-American, their work uses photography to investigate and explore identity, gender, history and the black body. Their work bridges a dark-room process, alternative methods of photography, and digital technologies focusing on revealing medium and subject. Their eye captures and explores topics of black female spirituality, tenderness, and strength while dealing with gentrification that adversely affects communities of color. Feli’s work focuses on dismantling historical romances that continue to exploit the identity and representation of black bodies by non-black protagonists. www.photofelli.com



Sage and Coombe Architects approaches every project with insight, intelligence, humor, patience and flexibility. Since 1995, the office has designed and managed construction of public spaces, buildings, renovations, and installations. During that time the office has cultivated a team of complementary professionals devoted to building great architecture within the constraints of practical realities. www.sageand-coombe.com



Antonia Januzzi-Thomas, Designer

Antonia joined Sage and Coombe as a summer intern in 2018. After receiving a Bachelor of Fine Arts degree in Architectural Design from the Maryland Institute College of Art in 2020 with multiple department awards, she came back as a freelance designer later the same year, and as a full-time designer in 2021. During her undergraduate years she explored many types of art making including traditional 2D (painting, drawing, etc.), 3D (wood working), and 4D (film making, performance, and installation art). She finally went on to study in the Architectural Design Department and began a focus on sustainability and visionary design after studying abroad in Holland working with members of the Dutch water engineering company Deltares, and working with XCOOP founder Christina Murphy and famous artist/architect Frank Fantauzzi while touring Italy. Her most recent work has turned an analytical and metaphysical eye towards the landscapes she grew up in-- discovering and dissecting the stories that we create and surround ourselves with as we build (or don’t build) the places we call home.



Russell Einbinder, Designer

Russell is an Architectural Designer at Sage and Coombe Architects where he has worked on a wide range of institutional and public projects. Varying in scale and typology from modular buildings to master-plans, he has done work in all phases of design for municipal agencies and governments in New York and New Jersey. Russell graduated Phi Beta Kappa and Summa Cum Laude with distinction from Amherst College in 2016 with a Bachelors of Arts in English and Architectural Studies. He then pursued a career in Architecture and received a Masters in Architecture from Columbia GSAPP in 2019 where he was awarded the Lucille Smyser Lowenfish Memorial Prize for his final semester studio project. While his undergraduate work focused on the intersection of film, television, poetry, and the built environment, his graduate studies researched sustainability and the role of architecture as a vehicle for social and environmental change.



